

DRYWALL

East Coast Radiation Protection Lead Lined Drywall (also known as Lead Lined Sheetrock or Lead Lined Gypsum Board) is constructed of a single layer of an un-pieced sheet of lead laminated to the specified size and thickness of drywall.

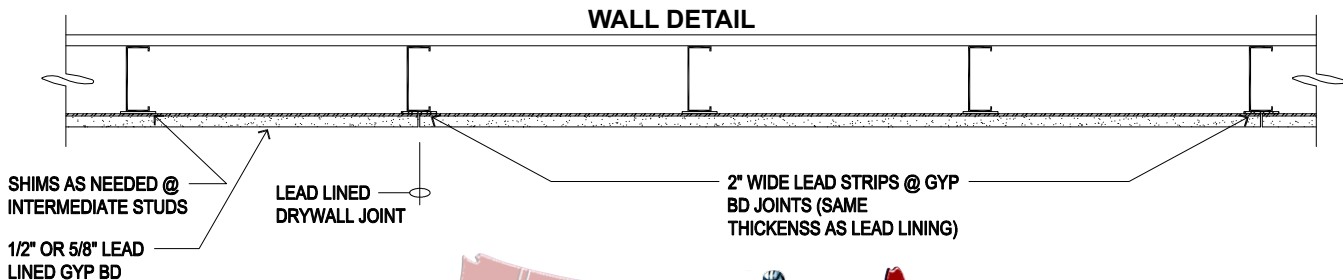
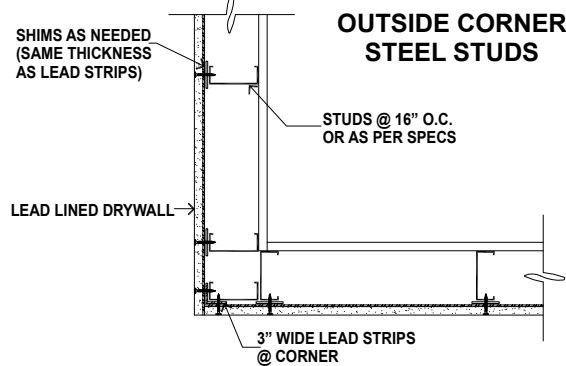
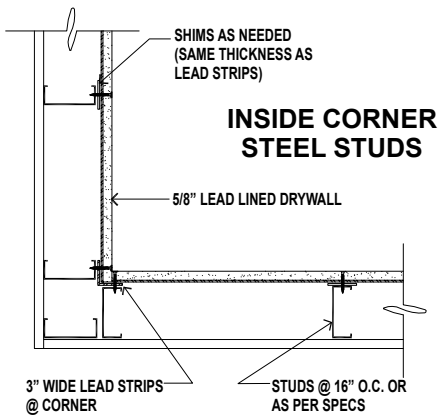
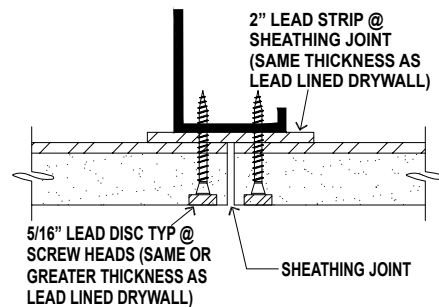
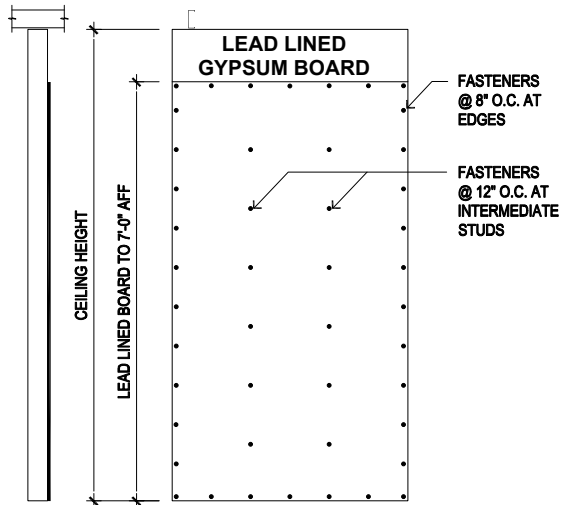
East Coast Radiation Protection supplies sheet lead meeting or exceeding Federal Specifications QQ-L-201F Grade C and ASTM B749-03 Standard Specification for Lead and Lead Alloy Strip, Sheet, and Plate Products in various thicknesses, depending on levels of radiation your construction calls for. The lead sheet is 99.9% pure or better of unpierced virgin lead, free of dross, oxidations, and cracks and is factory laminated to drywall. The drywall is furnished as type "X" fire code or non fire coded and is available in 1/2" to 5/8" thickness with a lead thickness of 1/32" to 1/8" maximum thickness. The drywall conforms to ASTM C36 and Federal Specifications QQ-L-201 F, Grade C, ASTM B-29.

Lead Lined Drywall Installation

The Lead Lined Drywall should be installed with the lead side going up against the studs. Lead lined drywall should be fastened at a minimum of 8" on center along the edges of each sheet, and a minimum of 12" on center at the intermediate studs with normal drywall screws. Strips of 2" ribbon lead of the same lead thickness should be applied to each of the joint studs (Every butt joint of the lead lined drywall) using a standard type of construction adhesive, prior to installing the Lead Lined Drywall. These strips of sheet lead provide the necessary 1" overlap with the adjoining sheets. Each fastener will be covered with a 5/16" dia. lead disc equal in thickness to the lead laminated to the sheetrock to eliminate the possibility of radiation leakage at the point of fastening. They should be applied using a fast drying construction adhesive.

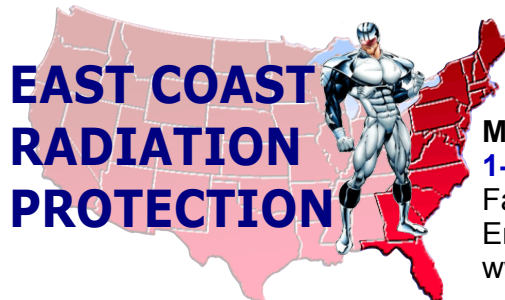
FOR LEAD THICKNESS EXCEEDING 1/8" PLEASE REFER TO OUR LEAD LINED PLYWOOD PAGE.

Refer to drawings here for the typical methods of installing and fastening lead laminated drywall.



LEAD LINED DRYWALL

Here to protect against radiation



Mike Salemi
1-877-LEAD488 (1-877-532-3488)
 Fax: 1-781-305-3479
 Email: mike@eastcoastradiation.com
www.eastcoastradiation.com