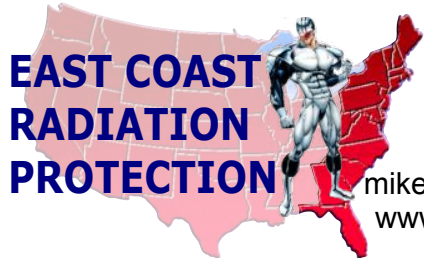
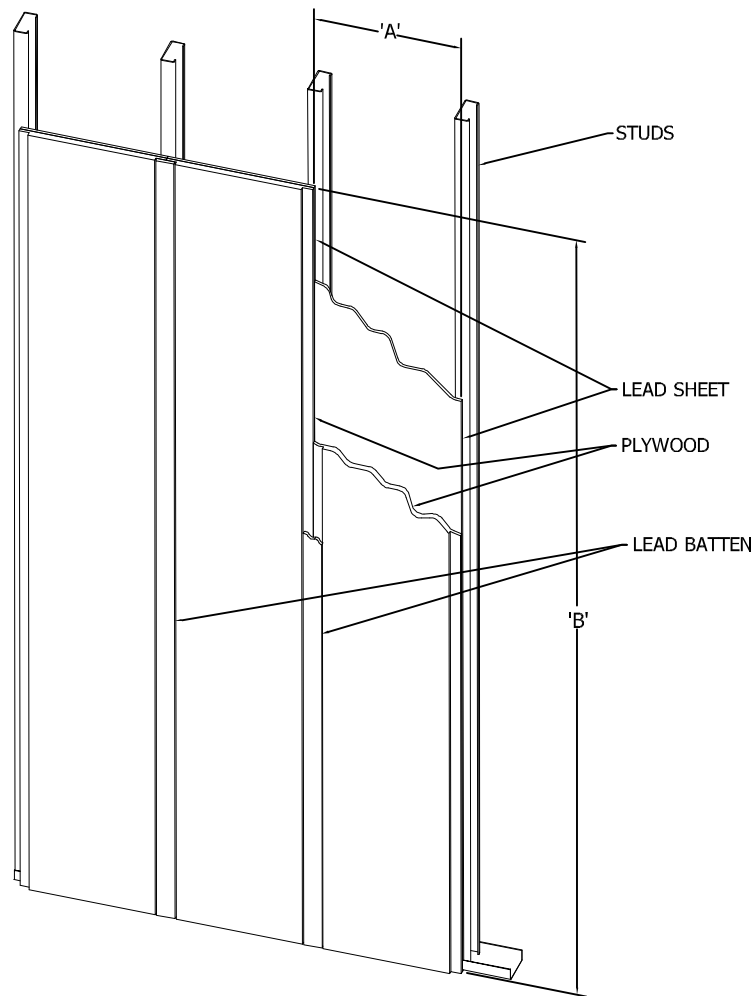


**SECTION VIEW AT BUTT JOINTS**



**EAST COAST  
RADIATION  
PROTECTION**

**Michael Salemi**  
 Tel. (877) LEAD488  
 Fax (781)305-3479  
 mike@eastcoastradiation.com  
 www.eastcoastradiation.com

**LEAD LINED FIRE RATED PLYWOOD**

DATE	DRAWN BY	ORDER NUMBER	
REVISED	DWG	<b>LP-100 - SHT 1 OF 2</b>	SCALE NTS

## LEAD LINED PLYWOOD

East Coast Radiation Protection lead lined plywood is furnished as 5/8" or 3/4" thick plywood PS-1 Interior Type Grade A. Fire retardant plywood will be used when indicated. Factory laminated pure lead sheet or lead plate that meets federal specification QQ-L-201 F is applied to one side of the plywood panel and covers the full height and width with one single layer (see section view on sheet 1).

<u>MATERIAL</u>	<u>THICKNESS</u>	<u>'A' WIDE</u>	<u>'B' LONG</u>	<u>QTY</u>
PLYWOOD				
LEAD SHEET				
PLYWOOD				
LEAD SHEET				
PLYWOOD				
LEAD SHEET				



**EAST COAST  
RADIATION  
PROTECTION**

**Michael Salemi**  
Tel. (877) LEAD488  
Fax (781)305-3479  
mike@eastcoastradiation.com  
www.eastcoastradiation.com

### LEAD LINED FIRE RATED PLYWOOD

DATE	DRAWN BY	ORDER NUMBER	
REVISED	DWG	LP-100 - SHT 2 OF 2	SCALE NTS